



PIPELINE  
SOLUTIONS

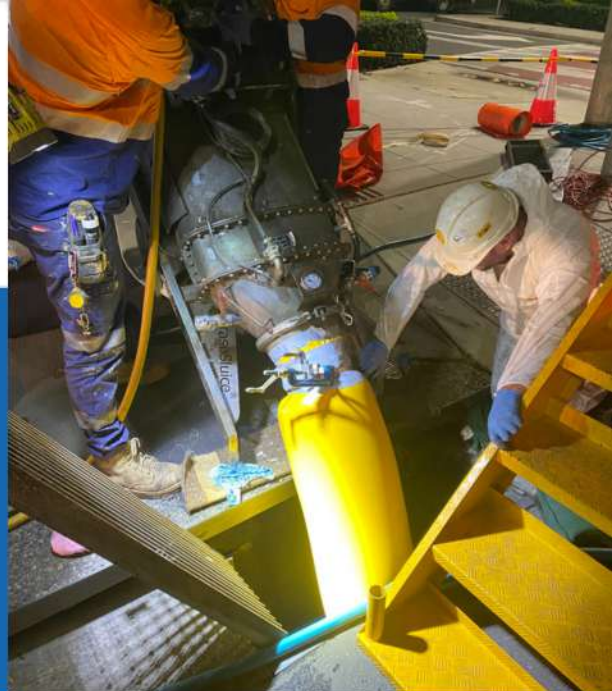
Quality

Environment

Health & Safety

## CASE STUDY

### Stormwater Drain Relining



#### Market

Drainage Network - Sydney

#### Scope of Works

Drain Cleaning, CCTV Inspections, UV Relining (DN375 to DN600), CIPP Inversion Lining (DN225-300), CIPP sectional Patches (DN375-DN525)

#### Network Type

Stormwater

#### Project Value

\$200k

#### Project outcome

Works were completed over 10 night shifts on time and within budget

#### TDMPS Applied Solution

Client required major rehabilitation works on severely deteriorated stormwater drains under major roads. Project required straight pit to pit relining and some dead-end shots into major culverts.

Challenges included single access points requiring a mix of felt liner, epoxy resin and hot water curing to install the new liners, as well as large displacement drains and a drain with a snaking formation.

CIPP sectional patches were used on the final DN525 culvert which also had only one access point to the upstream pit

#### Client Feedback

TDM Pipeline Solutions delivered high quality workmanship. A very competent work crew with a good safety ethic and good quality assurance. Highly responsive to issues, (especially when client supplied wrong pipe dimensions.)



CCTV INSPECTION | CLEANING & EDUCATION | RELINING | SECTIONAL POINT REPAIRS



# CASE STUDY

## Stormwater Drain Joint Repairs



Pre & Post Lining



UV Liner in place curing



Whatever it takes

### TDMPS Detailed Solution

TDM Pipeline Solutions were engaged to complete significant rehabilitation works on multiple stormwater drains running under major roads right across Sydney. The majority of these drains were significantly deteriorated.

The challenges for this project included not only straight pit to pit relining but also some dead-end shots into major culverts. One such culvert had only one access point available which required a mix of felt liner, epoxy resin and hot water curing to install the new liners.

Our team used the same combination of solutions to completely reline 2 drains which had very large displacements and another drain which had a snaking formation.

CIPP sectional patches were used on the final DN525 culvert which again had an extra level of difficulty due to their being only one access point to the upstream pit